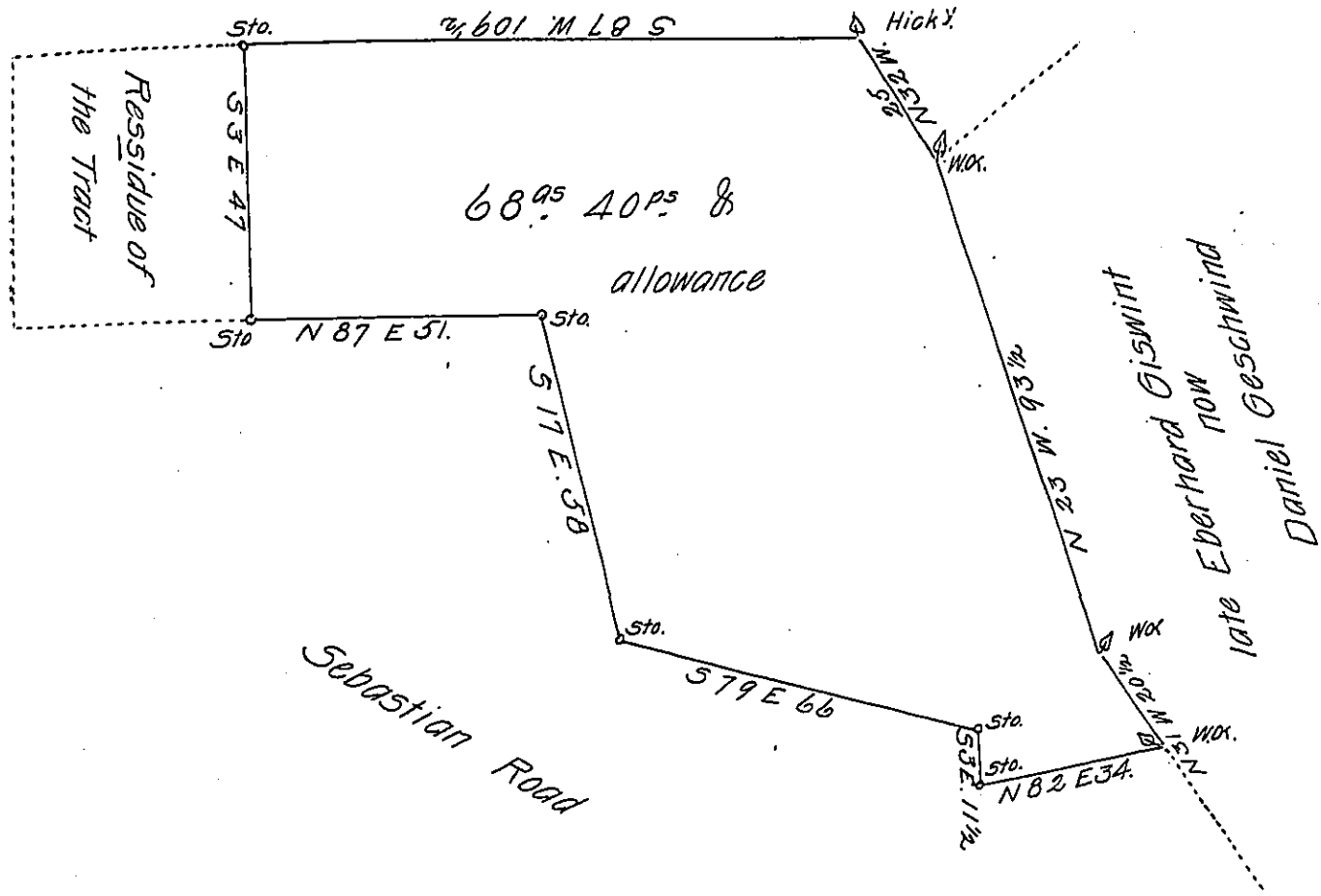


*late Christian Albrecht.*



*Situate in the Township of Upper Bern (alias Bern) County of Berks containing Sixty eight Acres 40 perches and Allowance of Six per Cent for Roads & a part of Eighty acres 63 ps & Allowance Originally Survey'd unto Eberhard Gishwint by Virtue of an (No. 1858) Application bearing date the first Day of September A.D 1766 on the — day of — AD — per*

*Resurveyed the above for Daniel Geschwind the 16th day of March 1820.*

*p- Jno. V Epler D.S*

*To Jacob Spangler Esquire }  
Surveyor General*

*IN TESTIMONY that the above is a copy of the original remaining on file in the Department of Internal Affairs of Pennsylvania, made conformably to an Act of Assembly approved the 16th day of February, 1833, I have hereunto set my Hand and caused the Seal of said Department to be affixed at Harrisburg, this Sixth day of January 1905*

*Loac D. Brown*  
Secretary of Internal Affairs.